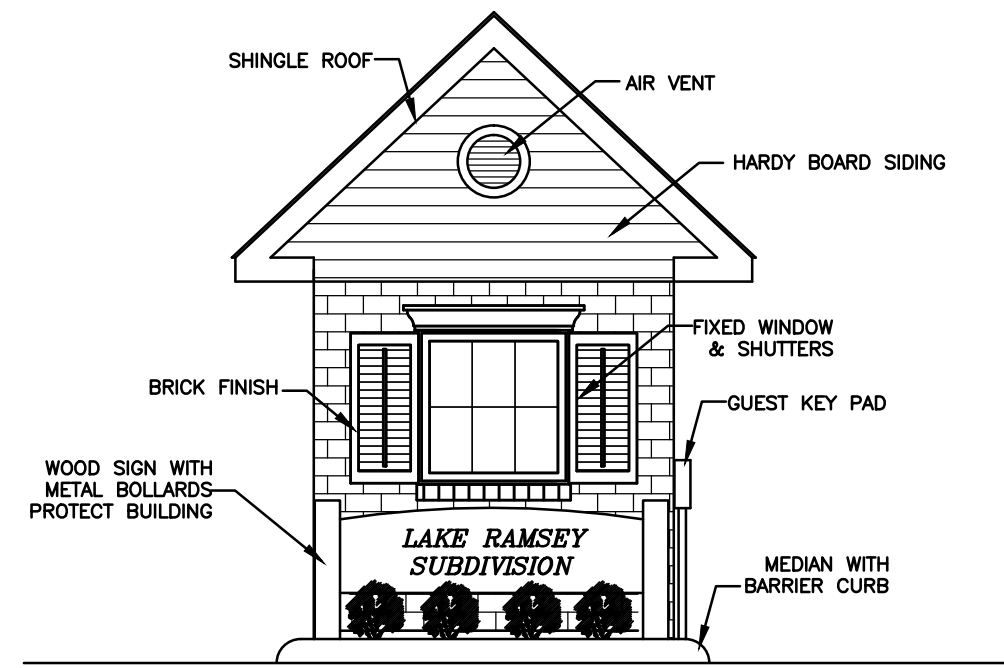


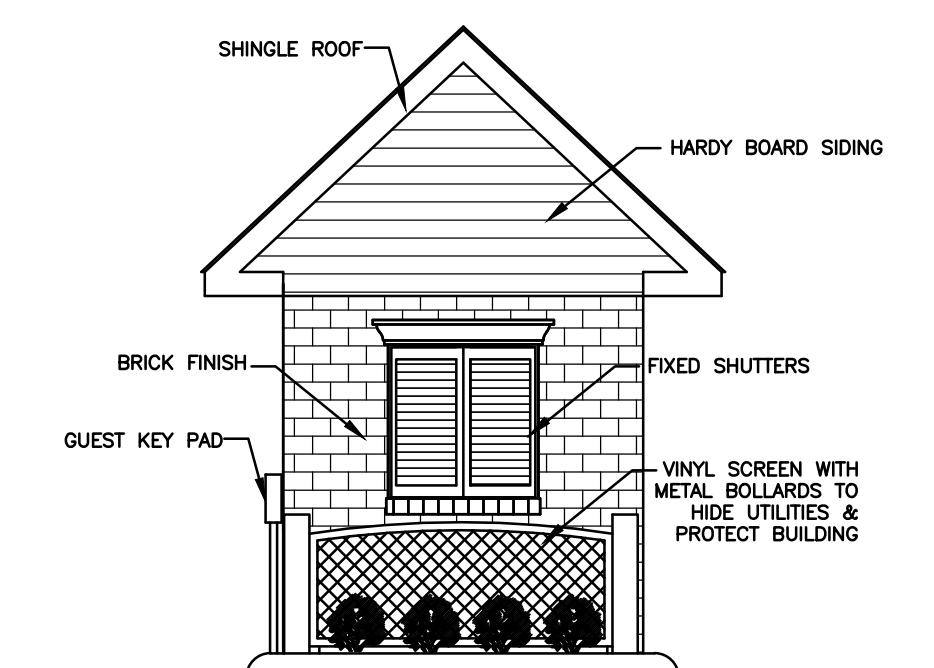
**ENTRANCE GATE & GUARD HOUSE PLAN**

NOT TO SCALE



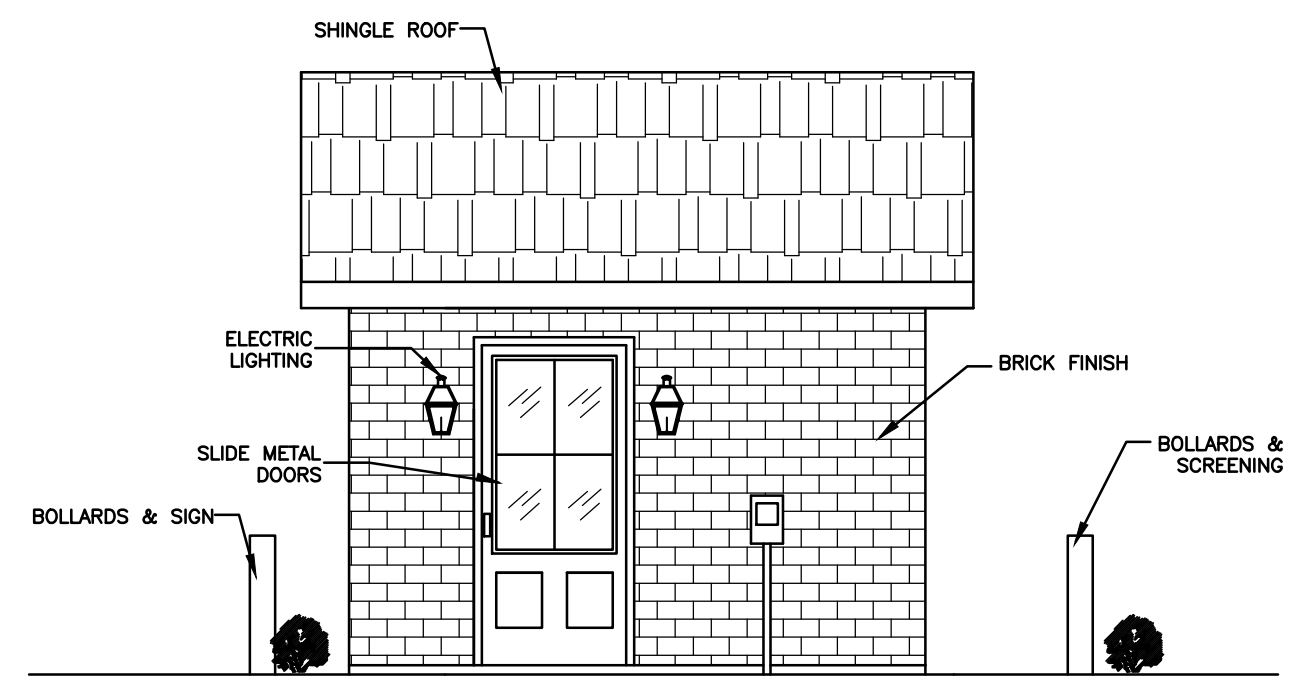
**FRONT OF GUARD HOUSE**

NOT TO SCALE



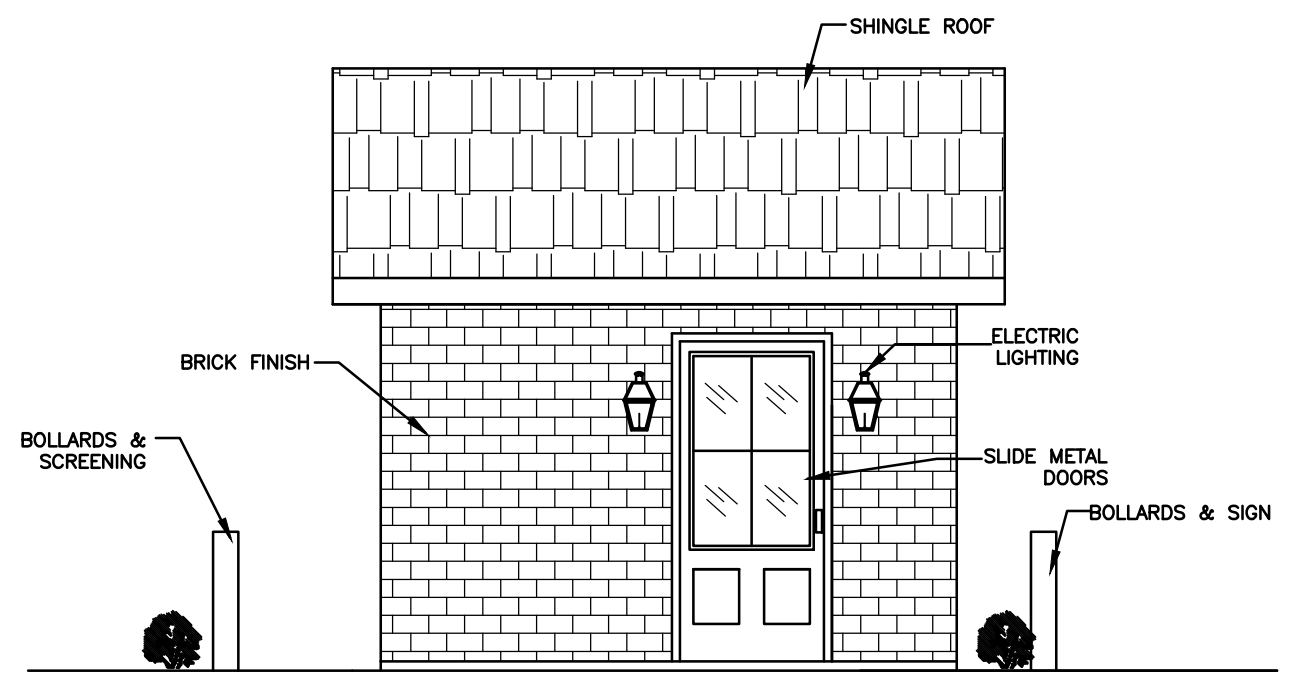
**REAR OF GUARD HOUSE**

NOT TO SCALE



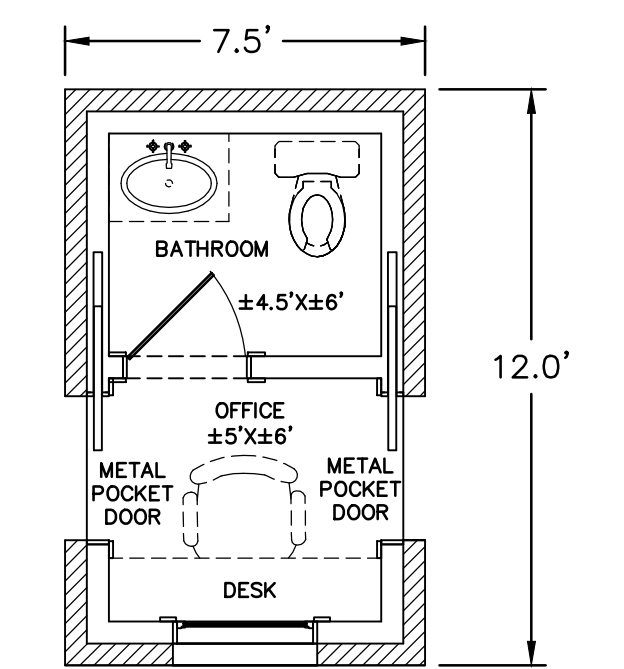
**ENTRANCE SIDE OF GUARD HOUSE**

NOT TO SCALE



**EXIT SIDE OF GUARD HOUSE**

NOT TO SCALE



**GUARD HOUSE FLOOR PLAN**

NOT TO SCALE

CLIENT: JOHN MAMOULIDES

PROJECT DESCRIPTION:  
ENTRANCE BOULEVARD PLAN  
LAKE RAMSEY SUBDIVISION  
SECTION 10, 11 & 14, TOWNSHIP 6 SOUTH, RANGE 10 EAST  
ST. TAMMANY PARISH, LOUISIANA

This drawing and design are the property of SCALFANO ENGINEERING, INC. They are submitted on the condition that they are not to be used, reproduced or copied in whole or part or used for furnishing information to others, without the prior written consent of SCALFANO ENGINEERING, INC. All common law rights of copyright and otherwise are hereby specifically reserved.

REVISION NO:

JOB NO: 01-047  
DATE: 04-30-2013  
DRAWN BY: RSB  
SCALE: AS PER PLAN  
COMPUTER FILE:  
MAMOULIDES01-047  
ENTRANCE BLVD PLANS  
ENTRANCE BLVD. 9

SHEET  
**S-2**